

Haumarutanga ipurangi: *Kia takatū!*

Kei te piki haere ngā whakaeke ipurangi – ko te rāngai mātauranga matua he pāture pai ki te hunga whakaeke. Mā tēnā, mā tēnā o ēnei hipanga e whā e whakaiti te tūponotanga o te whakaeke angitu. E kore e whakakoretia katoatia tō noho whakaraerae e aua hipanga, heoi anō ka whakapiki i tō haumarutanga ipurangi i tēnei wā tonu.

Kia mataara, me te whakamahere mō ngā rā kei mua



- Me āta whakarite e mōhio ana ngā tāngata katoa e whakamahi ana i ō pūnaha ki te hira o tēnei mea, te haumarutanga ipurangi.
- Me tuku ki tētahi tangata kotahi te haepapa mō te haumarutanga ipurangi.
- Whakaritea he hātepe urupare ki ngā whakaeke ipurangi.

Me whakarite kia haumaru ngā kupuhipa



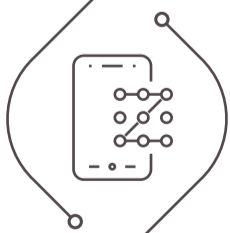
- Hangaia ngā kupuhipa kia roa me te kaha, kia auau anō hoki te huri.
- Whakamahia ngā kupuhipa rerekē mō ngā taupānga rerekē.
- Whakatenatenatia te tangata kia whakamahi i te pūwhakahaere kupuhipa – me te tohutohu atu me pēhea.

Kia auau te whakahōu pūmanawa me ngā pūnaha



- Kei roto i ngā whakahōu pūmanawa me te pūnaha ngā whakatikanga haumarutanga hira.
- Kia tino tere ka taea te tāuta i ngā whakahōu pūmanawa ina wātea.
- Kia kotahi te whakahōunga pūnaha i te iti rawa i te marama.

Whakamahia te manatoko āhuatanga-maha



- Me whakarite kia whai ara e rua i te iti rawa ngā kaiwhakamahi katoa ki te tautohu ko wai rātou ina takiuru.
- Ehara te kupuhipa takiuru kotahi hei uru atu ki ō pūnaha i te rawaka hei karo whakaeke ipurangi.

Rapu kōrero atu anō

E ū ana a TEC ki te whakarite kia haumaru ake ā-ipurangi te rāngai mātauranga matua. Mō te tohutohu me te tautoko, haere ki tā mātou kaupapa **Cyber Security for the Tertiary Sector**: www.tec.govt.nz